

THE STARTING GATE



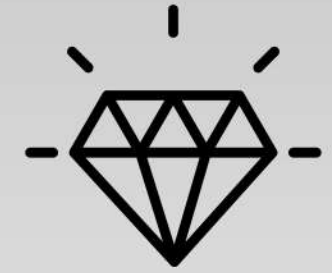
TRADINGANALYSIS.COM VIDEO
UPDATE FOR JUNE 4TH, 2025



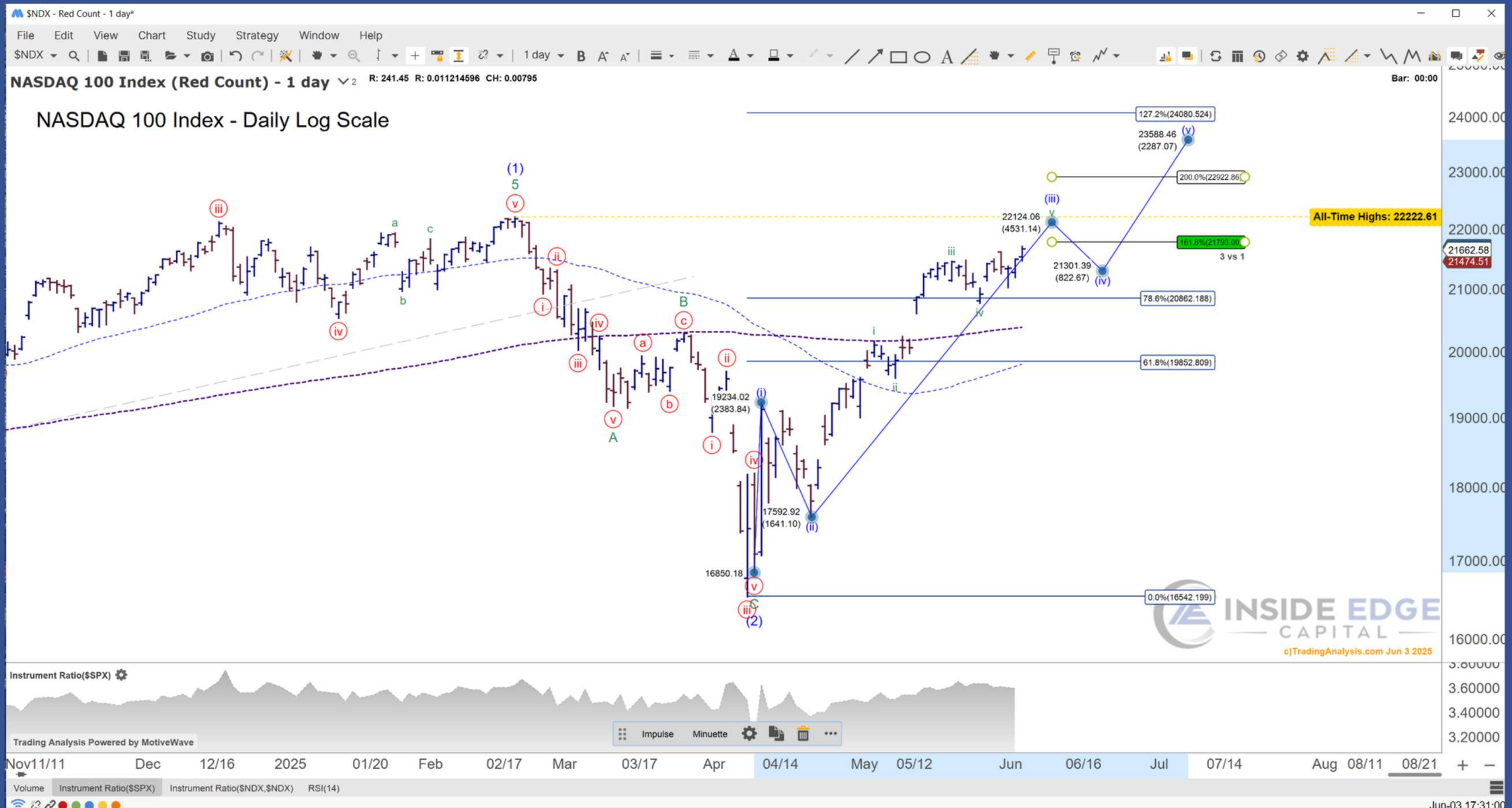
MARKET AND ECONOMY



PORTFOLIO HOLDINGS

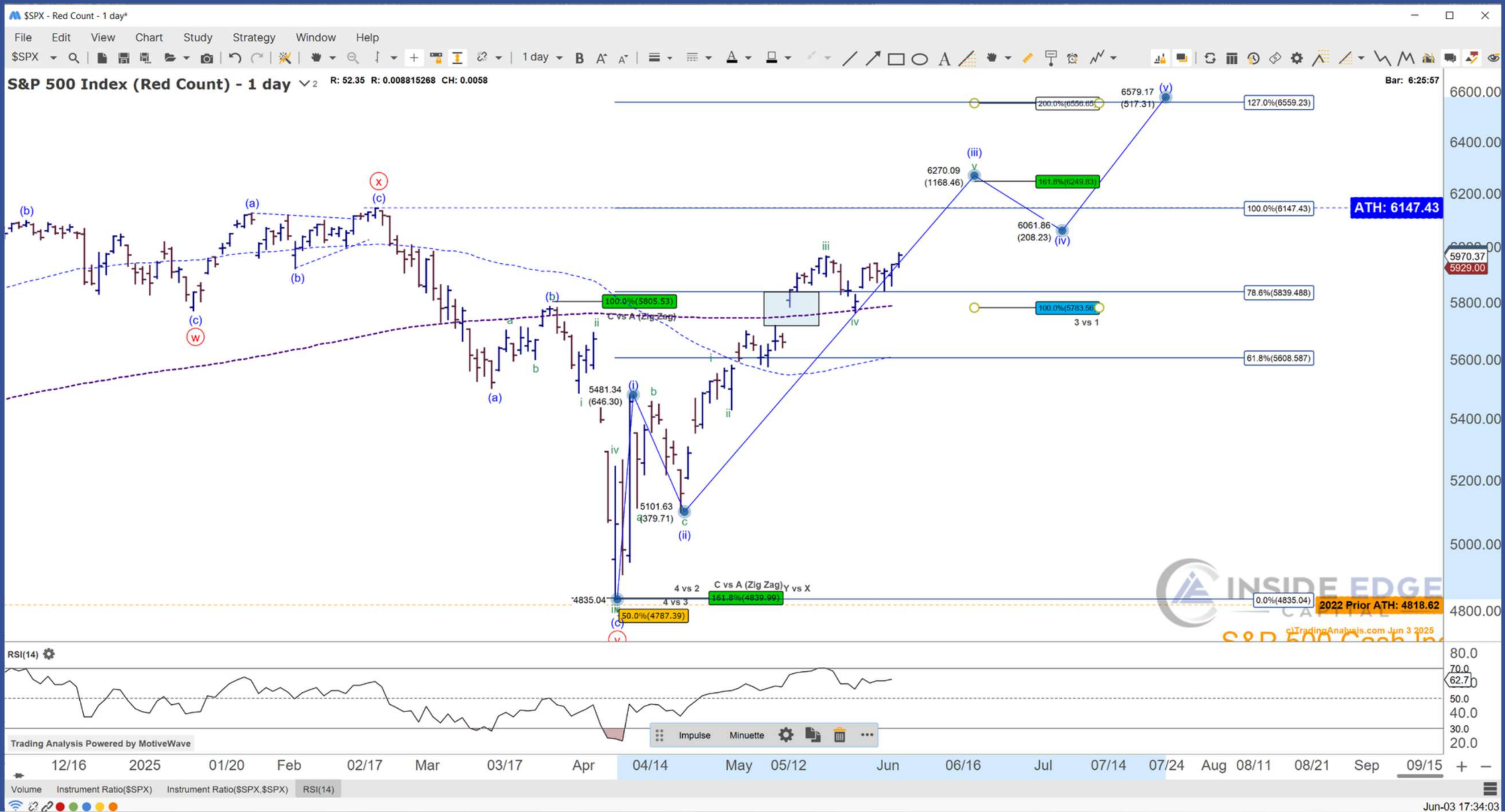


IMPORTANT ANNOUNCEMENT



NASDAQ 100 - DAILY COUNT





S&P 500 DAILY COUNT

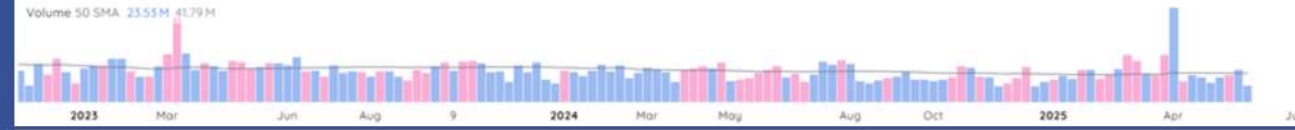


1 Week			1 Month			3 month			6 month		
Sector Rank - 1 Week - 11			Sector Rank - 1 Month - 11			Sector Rank - 3 Month - 11			Sector Rank - 12 Month - 11		
Sector Name	Rank	Stocks	Sector Name	Rank	Stocks	Sector Name	Rank	Stocks	Sector Name	Rank	Stocks
Health Care	1	1317	Industrials	1	778	Industrials	1	778	Financials	1	1264
Energy	2	292	Information Technology	2	817	Utilities	2	137	Industrials	2	778
Information Technology	3	817	Energy	3	292	Information Technology	3	817	Utilities	3	137
Real Estate	4	256	Consumer Discretionary	4	647	Materials	4	309	Information Technology	4	817
Industrials	5	778	Materials	5	309	Financials	5	1264	Real Estate	5	256
Materials	6	309	Communication Services	6	323	Communication Services	6	323	Communication Services	6	323
Consumer Staples	7	236	Financials	7	1264	Consumer Staples	7	236	Consumer Staples	7	236
Consumer Discretionary	8	647	Utilities	8	137	Consumer Discretionary	8	647	Consumer Discretionary	8	647
Utilities	9	137	Consumer Staples	9	236	Energy	9	292	Materials	9	309
Financials	10	1264	Health Care	10	1317	Health Care	10	1317	Health Care	10	1317
Communication Services	11	323	Real Estate	11	256	Real Estate	11	256	Energy	11	292
Group Rank - 1 Week - 25			Group Rank - 1 Month - 25			Group Rank - 3 Month - 25			Group Rank - 6 Month - 25		
Group Name	Rank	Stocks	Group Name	Rank	Stocks	Group Name	Rank	Stocks	Group Name	Rank	Stocks
Pharmaceuticals, Biotechnol...	1	922	Semiconductors & Semicond...	1	122	Capital Goods	1	460	Consumer Staples Distributio...	1	43
Insurance	2	137	Transportation	2	130	Automobiles & Components	2	93	Telecommunication Services	2	60
Energy	3	292	Capital Goods	3	460	Telecommunication Services	3	60	Utilities	3	137
Consumer Staples Distributio...	4	43	Software & Services	4	437	Transportation	4	130	Transportation	4	130
Semiconductors & Semicond...	5	122	Consumer Discretionary Dist...	5	173	Semiconductors & Semicond...	5	122	Banks	5	419
Technology Hardware & Equi...	6	258	Technology Hardware & Equi...	6	258	Software & Services	6	437	Automobiles & Components	6	93
Transportation	7	130	Automobiles & Components	7	93	Consumer Staples Distributio...	7	43	Semiconductors & Semicond...	7	122
Equity Real Estate Investmen...	8	178	Energy	8	292	Utilities	8	137	Insurance	8	137
Software & Services	9	437	Media & Entertainment	9	263	Materials	9	309	Media & Entertainment	9	263
Real Estate Management & ...	10	78	Commercial & Professional S...	10	188	Banks	10	419	Software & Services	10	437
Industry Rank - 1 Week - 74			Industry Rank - 1 Month - 74			Industry Rank - 3 Month - 74			Industry Rank - 6 Month - 74		
Industry Name	Rank	Stocks	Industry Name	Rank	Stocks	Industry Name	Rank	Stocks	Industry Name	Rank	Stocks
Health Care Technology	1	33	Passenger Airlines	1	25	Thrifts & Mortgage Finance	1	1	Thrifts & Mortgage Finance	1	1
Energy Equipment & Services	2	66	Independent Power and Ren...	2	28	Transportation Infrastructure	2	7	Transportation Infrastructure	2	7
Tobacco	3	6	Construction & Engineering	3	49	Construction & Engineering	3	49	Tobacco	3	6
Independent Power and Ren...	4	28	Semiconductors & Semicond...	4	122	Independent Power and Ren...	4	28	Entertainment	4	110
Office REITs	5	5	Electrical Equipment	5	80	Tobacco	5	6	Aerospace & Defense	5	53
Biotechnology	6	736	Electronic Equipment, Instru...	6	168	Aerospace & Defense	6	53	Wireless Telecommunication ...	6	21
Pharmaceuticals	7	140	Textiles, Apparel & Luxury Go...	7	69	Entertainment	7	110	Industrial Conglomerates	7	11
Construction & Engineering	8	49	Transportation Infrastructure	8	7	Metals & Mining	8	185	Consumer Staples Distributio...	8	43
Metals & Mining	9	185	Automobile Components	9	64	Electronic Equipment, Instru...	9	168	Independent Power and Ren...	9	28
Aerospace & Defense	10	53	Entertainment	10	110	Industrial Conalomerates	10	11	Diversified Consumer Services	10	60

SECTOR, GROUP, INDUSTRY RANKS



XLI - Weekly



XLI - Daily



XLK - Weekly



XLK - Daily

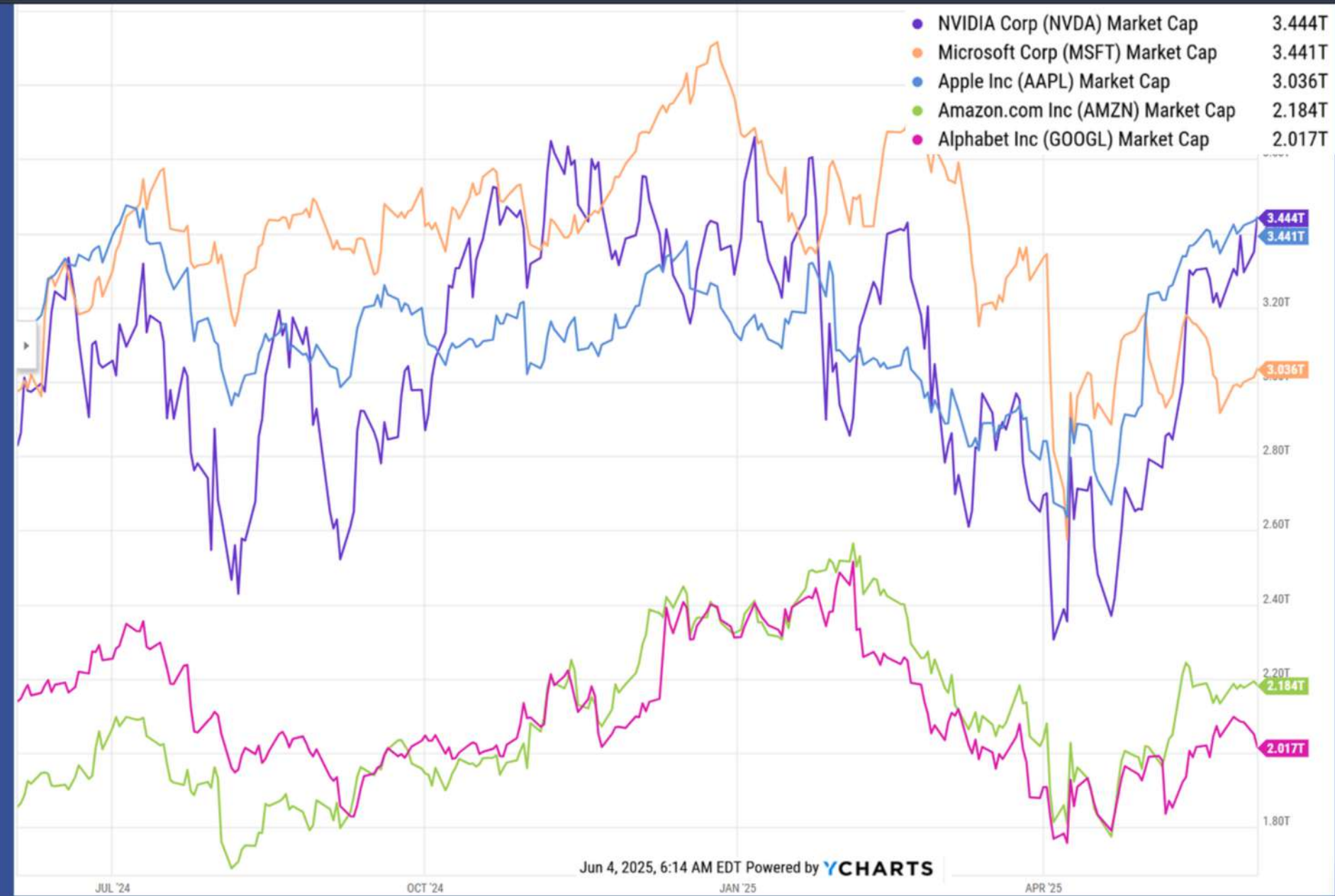


SECTOR, GROUP, INDUSTRY RANKS



Nvidia surpasses Apple, Microsoft as largest marketcap

Symbol	Name	% Chang...	Market Cap	Sector	Industry	Sub-Industry	50 Day > 200...	Yield	Composite 1M	Compos ite 3M	Composite 6M
NVDA	NVIDIA Cor...	2.80%	\$ 3.45T	Information Ti	Semiconductors & Semicond...	Semiconductors	×	0.03%	99	98	98
MSFT	Microsoft C...	0.22%	\$ 3.44T	Information Ti	Software	Systems Software	×	0.76%	91	95	93
AAPL	Apple Inc.	0.78%	\$ 3.05T	Information Ti	Technology Hardware, Stora...	Technology Hardware, Stora...	×	0.51%	70	47	48
AMZN	Amazon.Co...	-0.45%	\$ 2.18T	Consumer Dis	Broadline Retail	Broadline Retail	×	-	94	77	80
GOOG	Alphabet In...	-1.56%	\$ 2.04T	Communicatic	Interactive Media & Services	Interactive Media & Services	×	0.52%	40	38	65
GOOGL	Alphabet In...	-1.69%	\$ 2.02T	Communicatic	Interactive Media & Services	Interactive Media & Services	×	0.52%	40	39	65
META	Meta Platfo...	-0.60%	\$ 1.69T	Communicatic	Interactive Media & Services	Interactive Media & Services	×	0.35%	93	89	97
AVGO	Broadcom L...	3.27%	\$ 1.21T	Information Ti	Semiconductors & Semicond...	Semiconductors	✓	1.41%	99	99	99
TSLA	Tesla, Inc.	0.46%	\$ 1.11T	Consumer Dis	Automobiles	Automobile Manufacturers	×	-	96	96	86
WMT	Walmart Inc.	0.23%	\$ 801.1B	Consumer Sta	Consumer Staples Distributio...	Consumer Staples Merchandi...	✓	0.96%	43	75	88



NVIDIA LARGEST MARKET CAP





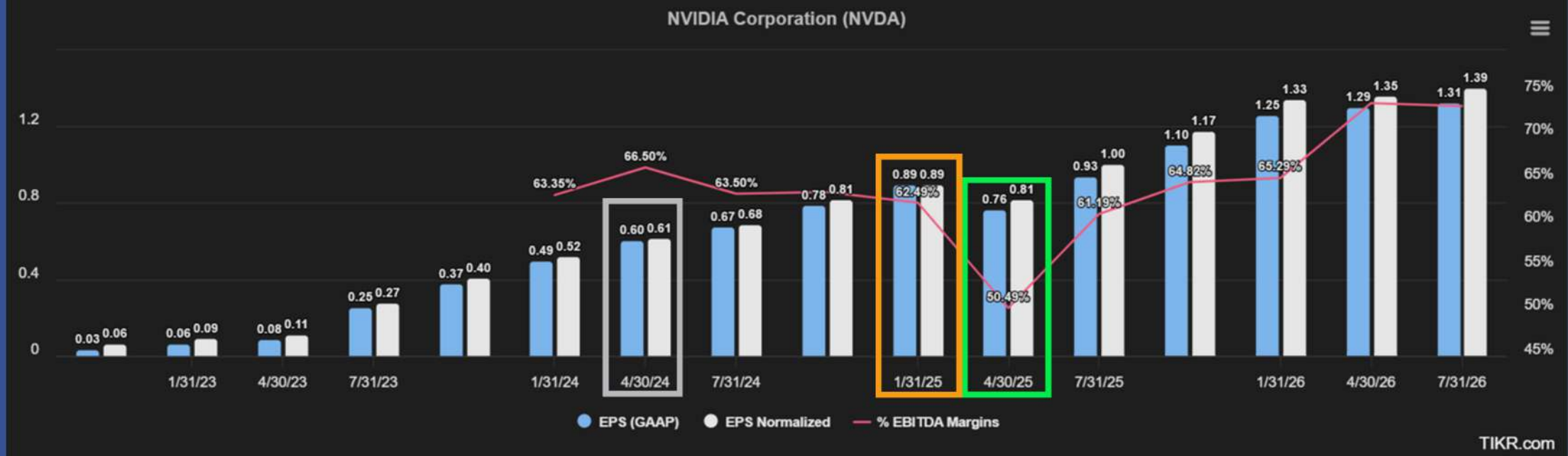
Q1 '26 earnings showed solid Y/Y growth of 32.4% as revenues grew 69.2%, but compared to last quarter EPS fell to \$0.81 from \$0.89 non-GAAP. EBITDA margins dropped from low 60's to 50.5%. This was caused by US export restrictions on H20 chips

NVIDIA (NASDAQ: NVDA) today reported revenue for the first quarter ended April 27, 2025, of \$44.1 billion, up 12% from the previous quarter and up 69% from a year ago.

On April 9, 2025, NVIDIA was informed by the U.S. government that a license is required for exports of its H20 products into the China market. As a result of these new requirements, NVIDIA incurred a \$4.5 billion charge in the first quarter of fiscal 2026 associated with H20 excess inventory and purchase obligations as the demand for H20 diminished. Sales of H20 products were \$4.6 billion for the first quarter of fiscal 2026 prior to the new export licensing requirements. NVIDIA was unable to ship an additional \$2.5 billion of H20 revenue in the first quarter.

For the quarter, GAAP and non-GAAP gross margins were 60.5% and 61.0%, respectively. Excluding the \$4.5 billion charge, first quarter non-GAAP gross margin would have been 71.3%.

For the quarter, GAAP and non-GAAP earnings per diluted share were \$0.76 and \$0.81, respectively. Excluding the \$4.5 billion charge and related tax impact, first quarter non-GAAP diluted earnings per share would have been \$0.96.



Actuals & Forward Estimates TIKR.com 3 A	10/31/23 A	1/31/24 A	4/30/24 A	7/31/24 A	10/31/24 A	1/31/25 A	4/30/25 A	7/31/25 E	10/31/25 E	1/31/26 E	4/30/26 E	7/31/26 E	CAGR	
Revenue	.00	18,120.00	22,103.00	26,044.00	30,040.00	35,082.00	39,331.00	44,062.00	45,602.90	51,804.81	57,540.65	58,759.34	60,726.40	86.0%
% Change YoY	.5%	205.5%	265.3%	262.1%	122.4%	93.6%	77.9%	69.2%	51.8%	47.7%	46.3%	33.4%	33.2%	
EBITDA	.00		14,002.00	17,319.00	19,075.00	22,347.00	24,577.00	22,249.00	27,905.07	33,579.53	37,568.03	43,385.80	44,635.80	
% Change YoY							75.5%	28.5%	46.3%	50.3%	52.9%	95.0%	60.0%	
% EBITDA Margins			63.3%	66.5%	63.5%	63.7%	62.5%	50.5%	61.2%	64.8%	65.3%	73.8%	73.5%	
EBIT	.00	11,557.00	14,749.00	18,059.00	19,937.00	23,276.00	25,516.00	23,275.00	28,803.49	33,833.99	38,448.38	38,747.17	40,091.64	138.7%
% Change YoY	.9%	652.4%	563.2%	491.7%	156.4%	101.4%	73.0%	28.9%	44.5%	45.4%	50.7%	66.5%	39.2%	
% EBIT Margins	.6%	63.8%	66.7%	69.3%	66.4%	66.3%	64.9%	52.8%	63.2%	65.3%	66.8%	65.9%	66.0%	28.3%
EBT Normalized	.00	11,662.00	14,981.00	18,361.00	20,317.00	23,687.00	25,973.00	23,723.00	29,034.99	34,239.93	39,037.47	39,383.49	40,837.78	138.8%
% Change YoY	.7%	647.6%	560.8%	485.5%	157.3%	103.1%	73.4%	29.2%	42.9%	44.6%	50.3%	66.0%	40.7%	
% EBT Margins	.5%	64.4%	67.8%	70.5%	67.6%	67.5%	66.0%	53.8%	63.7%	66.1%	67.8%	67.0%	67.2%	28.4%
Net Income Normalized	.00	10,020.00	12,839.00	15,238.00	16,952.00	20,010.00	22,066.00	19,894.00	24,333.94	28,526.13	32,554.07	32,761.05	33,571.30	130.9%
% Change YoY	.7%	588.2%	490.6%	461.7%	151.5%	99.7%	71.9%	30.6%	43.5%	42.6%	47.5%	64.7%	38.0%	
% Net Income Margins	.9%	55.3%	58.1%	58.5%	56.4%	57.0%	56.1%	45.2%	53.4%	55.1%	56.6%	55.8%	55.3%	24.2%
EPS Normalized	.27	0.40	0.52	0.61	0.68	0.81	0.89	0.81	1.00	1.17	1.33	1.35	1.39	133.4%
% Change YoY	.4%	593.1%	486.4%	461.5%	151.9%	101.5%	72.5%	32.4%	46.6%	44.4%	49.6%	67.0%	39.6%	
EPS (GAAP)	.25	0.37	0.49	0.60	0.67	0.78	0.89	0.76	0.93	1.10	1.25	1.29	1.31	181.8%
% Change YoY	.8%	1,274.1%	764.9%	629.3%	170.2%	110.2%	80.5%	27.1%	38.7%	40.6%	40.4%	70.3%	41.4%	

Q1 '25

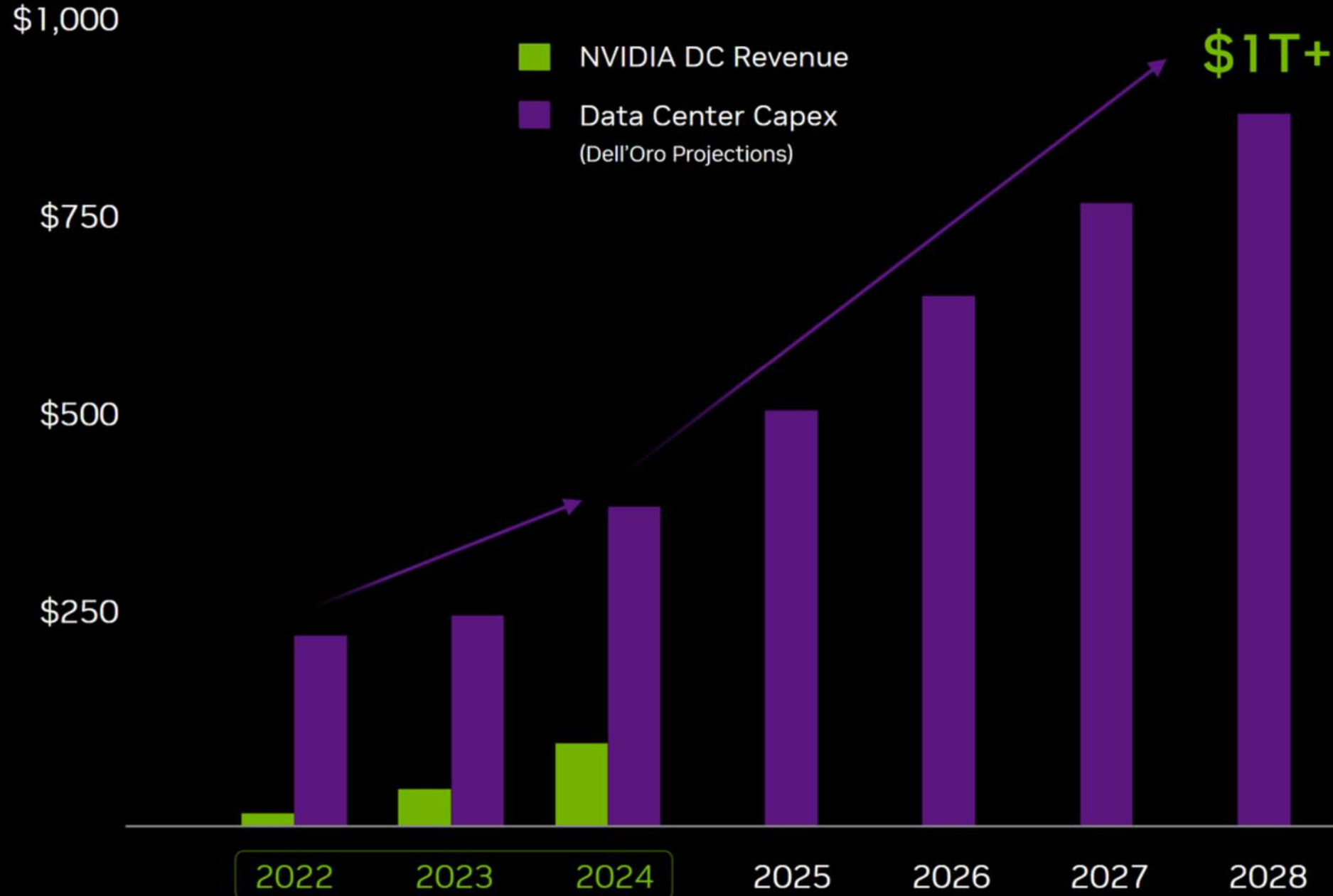
Q4 '25 Q1 '26

NVIDIA Q1 '26 EARNINGS REVIEW



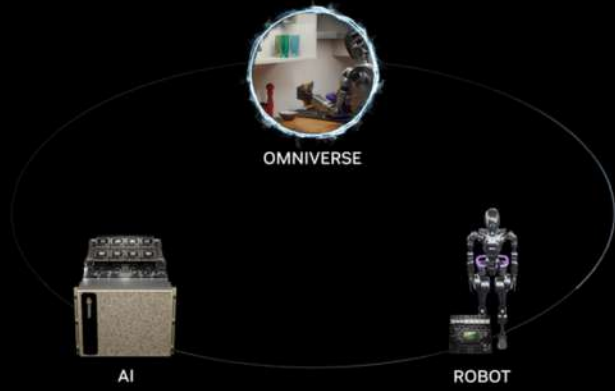


Computing at Inflection Point



Segments, As Reported	1/29/17	1/28/18	1/27/19	1/26/20	1/31/21	1/30/22	1/29/23	1/28/24	1/26/25
Business Segments									
Revenues									
Automotive			641.00	700.00	536.00	566.00	903.00	1,091.00	1,694.00
Data Center			2,932.00	2,983.00	6,696.00	10,613.00	15,005.00	47,525.00	115,186.00
Gaming			6,246.00	5,518.00	7,759.00	12,462.00	9,067.00	10,447.00	11,350.00
Oem and Other			767.00	505.00	631.00	1,162.00	455.00	306.00	389.00
Professional Visualization			1,130.00	1,212.00	1,053.00	2,111.00	1,544.00	1,553.00	1,878.00
All Other		264.00	43.00						
Gpu		5,822.00	8,137.00						
Tegra Processor		824.00	1,534.00						
Geographic Segments									
Revenues									
China		1,305.00	1,896.00	2,801.00	2,731.00	3,886.00	7,111.00	5,785.00	10,306.00
Other Americas		486.00	719.00	767.00	599.00	833.00	6,910.00	5,911.00	10,245.00
Singapore									23,684.00
Taiwan Province of China		2,546.00	2,991.00	3,360.00	3,025.00	4,531.00	8,544.00	6,986.00	13,405.00
United States		904.00	1,274.00	1,506.00	886.00	3,214.00	4,349.00	8,292.00	26,966.00
Europe		659.00	768.00	914.00	992.00	1,118.00			
Other Asia Pacific		1,010.00	2,066.00	2,368.00	2,685.00	3,093.00			

NVIDIA Omniverse and AI Revolutionizing Manufacturing and Robotics



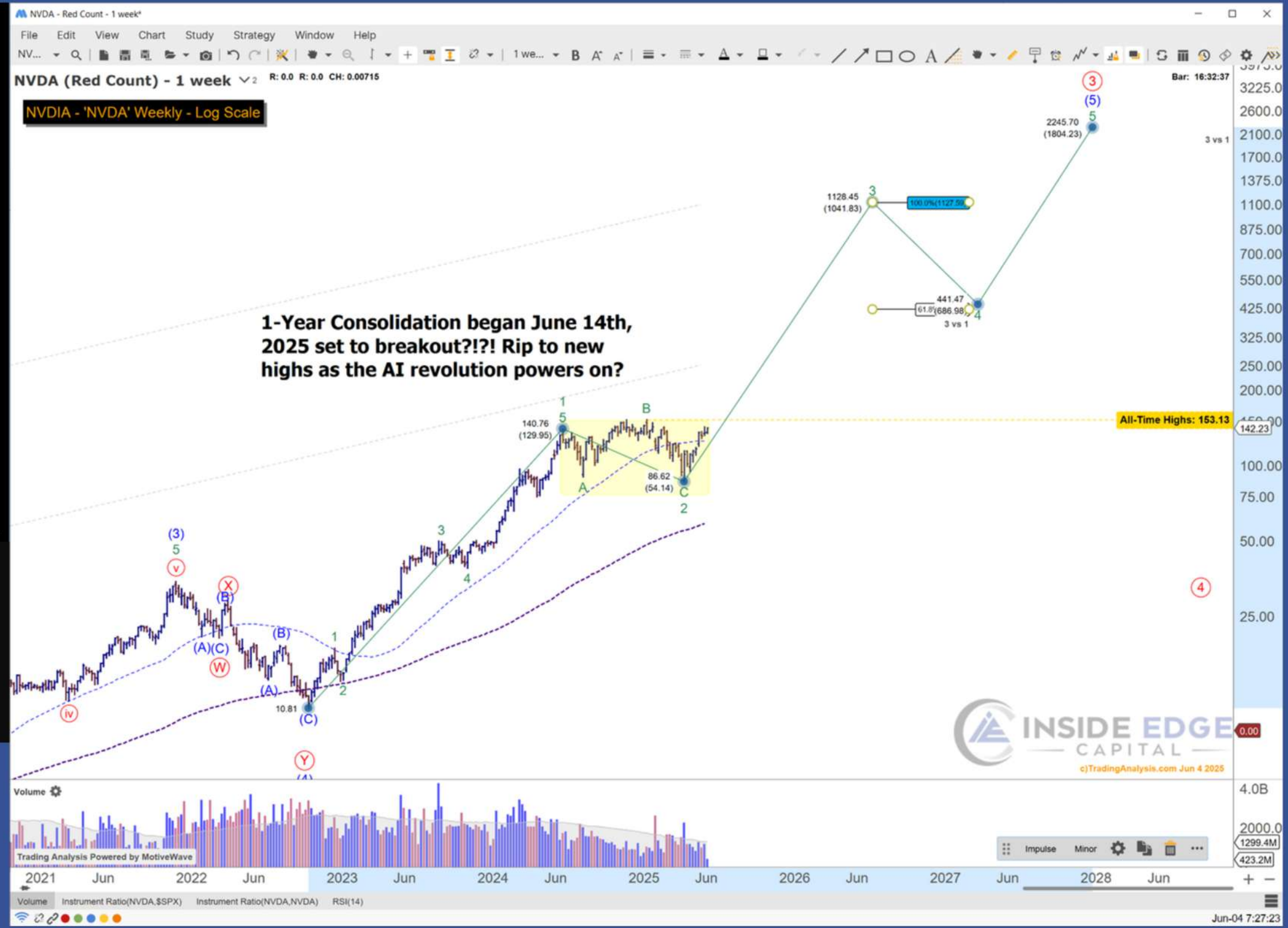
The next AI wave is physical AI—models that can perceive, understand, and interact with the physical world. Physical AI will embody robotic systems—from autonomous vehicles to industrial robots and humanoids, to warehouses and factories.

Three computers and software stacks are required to build physical AI: NVIDIA AI on DGX to train the AI model, NVIDIA Omniverse on OVX to teach, test, and validate the AI model's skills, and NVIDIA AGX to run the AI software on the robot.

Enterprises license NVIDIA Omniverse at \$4,500 per GPU per year.

Share Repurchase

Utilized \$14.1B of cash for repurchases in Q1 FY26
 \$24.3B remaining authorization as of the end of Q1



NVIDIA Q1 '26 EARNINGS REVIEW



ENERGY

Meta signs nuclear power deal with Constellation Energy

PUBLISHED TUE, JUN 3 2025 6:31 AM EDT | UPDATED TUE, JUN 3 2025 10:57 AM EDT

Pippa Stevens
@PIPPASTEVEN13

SHARE f X in

KEY POINTS

- Meta has signed a 20-year agreement to buy nuclear power from Constellation Energy.
- Beginning in 2027, the tech giant will purchase about 1.1 gigawatts of power from Constellation's Clinton Clean Energy Center in Illinois. Without Meta's backing, the plant was in danger of premature closure.
- Tech companies, including Amazon, Google and Meta, signed a pledge in March led by the World Nuclear Association calling for nuclear energy worldwide to triple by 2050.

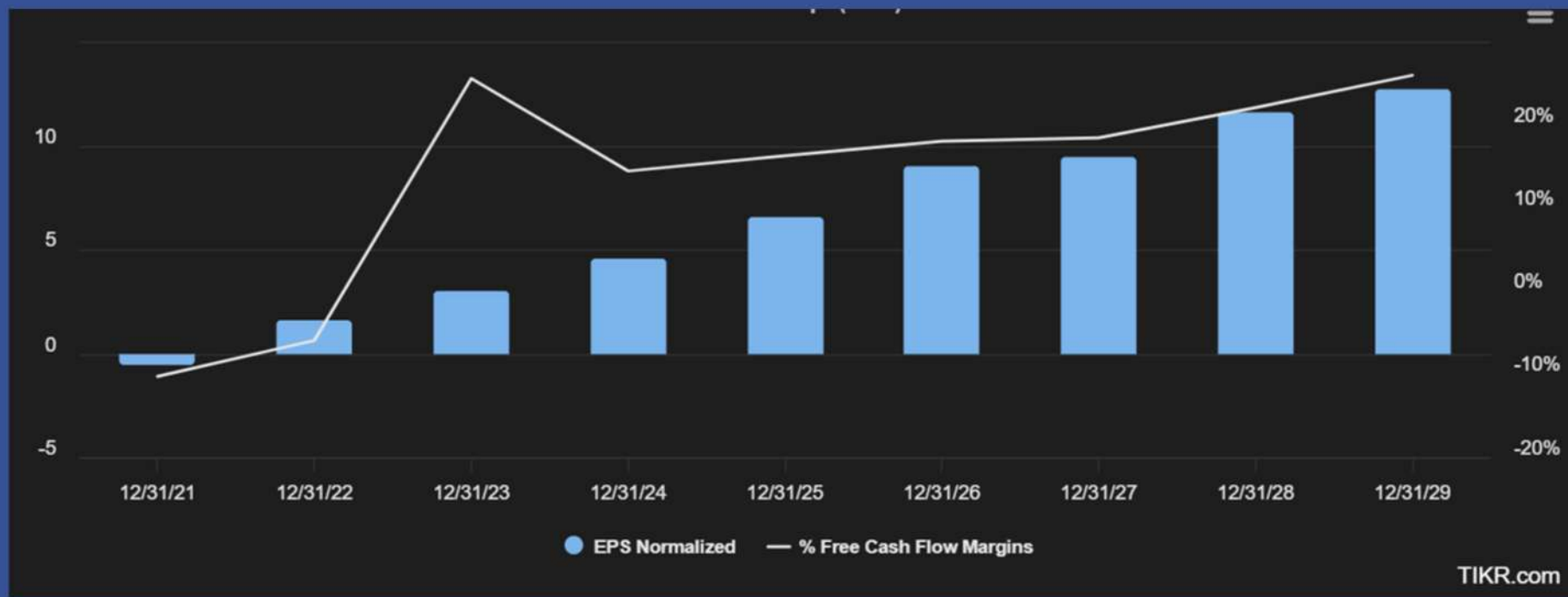


Symbol	Name	% Chang.	Market Cap	Sector	Industry	Sub-Industry	50 Day
AXON	Axon Enter...	0.07%	\$ 58.36B	Industrials	Aerospace & Defense	Aerospace & Defense	0.4
FIX	Comfort Sy...	4.22%	\$ 17.66B	Industrials	Construction & Engineering	Construction & Engineering	0.1
VRT	Vertiv Holdi...	2.87%	\$ 42.8B	Industrials	Electrical Equipment	Electrical Components & Equi...	0.9
BWXT	BWX Techn...	1.79%	\$ 11.76B	Industrials	Aerospace & Defense	Aerospace & Defense	0.0
SMR	NuScale Po...	-0.91%	\$ 4.05B	Industrials	Machinery	Industrial Machinery & Suppl...	0.0
HEI	HEICO Corp...	-0.82%	\$ 41.48B	Industrials	Aerospace & Defense	Aerospace & Defense	2.8
ARES	Ares Mana...	1.08%	\$ 35.29B	Financials	Capital Markets	Asset Management & Custod...	1.3
AXP	American E...	0.65%	\$ 208.46B	Financials	Consumer Finance	Consumer Finance	0.6
IBKR	Interactive ...	-0.14%	\$ 22.65B	Financials	Capital Markets	Investment Banking & Broker...	0.4
TOST	Toast, Inc.	-5.16%	\$ 23.94B	Financials	Financial Services	Transaction & Payment Proc...	0.4
HOOD	Robinhood ...	5.50%	\$ 63.44B	Financials	Capital Markets	Financial Exchanges & Data	0.4
CRS	Carpenter ...	2.65%	\$ 12.36B	Materials	Metals & Mining	Steel	0.4
COST	Costco Wh...	-0.12%	\$ 468.64B	Consumer Sta	Consumer Staples Distributio...	Consumer Staples Merchand...	0.4
SFM	Sprouts Far...	-2.41%	\$ 17.26B	Consumer Sta	Consumer Staples Distributio...	Food Retail	0.4
HIMS	Hims & Her...	-3.49%	\$ 12.16B	Health Care	Health Care Providers & Serv...	Health Care Services	0.4
THC	Tenet Heal...	1.04%	\$ 16.2B	Health Care	Health Care Providers & Serv...	Health Care Facilities	0.4
AROC	Archrock, I...	1.41%	\$ 4.5B	Energy	Energy Equipment & Services	Oil & Gas Equipment & Servic...	3.1
EQT	EQT Corpor...	-0.03%	\$ 33.87B	Energy	Oil, Gas & Consumable Fuels	Oil & Gas Exploration & Prod...	1.2
VST	Vistra Corp...	5.11%	\$ 59.81B	Utilities	Independent Power and Rene...	Independent Power Producer...	0.5
OKLO	Oklo Inc.	-5.15%	\$ 6.87B	Utilities	Electric Utilities	Electric Utilities	0.2
GEV	GE Vernova...	1.63%	\$ 135.6B	Utilities	Independent Power and Rene...	Independent Power Producer...	0.2
IBIT	iShares Bit...	1.75%	-	-	-	-	0.2
RCL	Royal Carib...	1.81%	\$ 71.74B	Consumer Dis	Hotels, Restaurants & Leisure	Hotels, Resorts & Cruise Lines	1.3

President Donald Trump recently signed [four executive orders](#) aimed at speeding nuclear deployment, setting a target of quadrupling U.S. nuclear energy by 2050. The executive orders call for, among other things, an overhaul of the Nuclear Regulatory Commission, as well as building out a domestic supply chain for nuclear fuel.

The White House has also called for faster regulatory approval for reactors — including small modular reactors. In the past, nuclear projects have been plagued by high upfront costs and long construction timelines. The industry is hoping that SMRs can be a more cost-effective way to scale up nuclear power. At present, there are no operational SMRs in the U.S.

I don't hold Constellation, but I do hold VST, OKLO, and GEV in Tactical Alpha Growth at Inside Edge. In Active Opps we hold VST



VST has grown top line revenue consistently since 2021 and GAAP EPS aggressively, until this year where analysts see a 11.79% contraction. Non-GAAP EPS is showing growth rates since 2022 of 378%, 88%, 54%, 43%, and in 2026 another 37% growth according to S&P Global Capital IQ.

Actuals & Forward Estimates TIKR.com	12/31/21 A	12/31/22 A	12/31/23 A	12/31/24 A	12/31/25 E	12/31/26 E
Revenue	12,077.00	13,728.00	14,779.00	17,224.00	20,191.18	21,588.28
% Change YoY	5.5%	13.7%	7.7%	16.5%	17.2%	6.9%
EBITDA	1,908.00	2,994.00	4,101.00	5,539.00	5,951.45	6,706.04
% Change YoY	(48.2%)	56.9%	37.0%	35.1%	7.4%	12.7%
% EBITDA Margins	15.8%	21.8%	27.7%	32.2%	29.5%	31.1%
EBIT	(1,515.00)	(1,103.00)	2,710.00	4,081.00	3,866.97	4,424.09
% Change YoY	(192.5%)	27.2%	345.7%	50.6%	(5.2%)	14.4%
% EBIT Margins	(12.5%)	(8.0%)	18.3%	23.7%	19.2%	20.5%
EBT Normalized	(358.00)	879.00	1,690.00	2,409.00	2,885.05	4,072.07
% Change YoY	(130.3%)	345.5%	92.3%	42.5%	19.8%	41.1%
% EBT Margins	(3.0%)	6.4%	11.4%	14.0%	14.3%	18.9%
Net Income Normalized	(272.78)	664.79	1,111.74	1,608.88	2,183.41	2,887.31
% Change YoY	(132.5%)	343.7%	67.2%	44.7%	35.7%	32.2%
% Net Income Margins	(2.3%)	4.8%	7.5%	9.3%	10.8%	13.4%
EPS Normalized	(0.57)	1.57	2.96	4.56	6.54	8.98
% Change YoY	(133.1%)	378.2%	88.3%	54.0%	43.2%	37.4%
EPS (GAAP)	(2.69)	(3.26)	3.58	7.00	6.26	8.00
% Change YoY	(306.9%)	21.2%	209.8%	95.5%	(10.5%)	27.8%
Free Cash Flow	(1,239.00)	(816.00)	3,777.00	2,485.00	3,285.91	3,887.27
% Change YoY	(148.3%)	34.1%	562.9%	(34.2%)	32.2%	18.3%
% Free Cash Flow Margins	(10.3%)	(5.9%)	25.6%	14.4%	16.3%	18.0%
Dividend Per Share	0.60	0.72	0.82	0.87	0.92	0.99

VISTRA - 'VST'



Symbol	Name	% Chang...	Market Cap	Sector	Industry	Sub-Industry	50 Day > 200...	Yield	Compos...	Compos...	Compos...	Compos...	EPS Rating	Fundam...	RS 1M	RS 3M	RS 6M	Next Earnings...	C	Applied Filters
QUBT	Quantum Computing...	-1.00%	\$ 1.68B	Information Ti	Electronic Equipment, Instru...	Electronic Equipment & Instru...	✓	-	99	95	97	98	77	-	96	97	95	-	United State	Applied Filters Group 1 Last: > \$10 Avg EPS Growth Last 2 Qtrs: > 20.00% Avg Sales Growth Last 2 Qtrs: > 20.00% Avg EPS Growth Last 2 Yrs: > 20.00% Avg Sales Growth Last 2 Yrs: > 20.00% Avg Sales Growth Fwd 2 Qtrs: > 20.00% Avg EPS Growth Fwd 2 Qtrs: > 20.00% Market Cap: > \$1B 50 Day > 200 Day: Yes
LIF	Life360, Inc.	1.80%	\$ 14.31B	Information Ti	Software	Application Software	✓	-	99	99	98	99	93	A+	95	96	95	-	United State	
MELI	MercadoLibre, Inc.	-0.17%	\$ 131.87B	Consumer Disi	Broadline Retail	Broadline Retail	✓	-	98	93	97	94	91	A	81	86	91	-	Uruguay	
PAY	Paymentus Holdings,...	-0.37%	\$ 4.83B	Information Ti	Electronic Equipment, Instru...	Electronic Equipment & Instru...	✓	-	97	96	93	98	83	A	77	91	88	-	United State	
NYAX	Nayax Ltd.	3.37%	\$ 1.61B	Information Ti	Software	Application Software	✓	-	95	97	98	98	95	-	79	86	91	-	Israel	
APP	AppLovin Corporation	0.78%	\$ 135.43B	Information Ti	Software	Application Software	✓	-	90	92	95	98	99	A+	92	93	91	-	United State	
HIMS	Hims & Hers Health, ...	0.00%	\$ 12.16B	Health Care	Health Care Providers & Serv...	Health Care Services	✓	-	90	92	97	95	99	A+	92	95	96	-	United State	
BROS	Dutch Bros Inc.	-0.04%	\$ 8.56B	Consumer Disi	Hotels, Restaurants & Leisure	Restaurants	✓	-	89	77	95	96	94	A+	83	79	87	-	United State	
HOOD	Robinhood Markets, ...	-0.26%	\$ 63.44B	Financials	Capital Markets	Financial Exchanges & Data	✓	-	89	93	98	99	99	A+	95	96	96	Jul 30, 2025	United State	
TOST	Toast, Inc.	-0.91%	\$ 23.94B	Financials	Financial Services	Transaction & Payment Proc...	✓	-	87	91	93	99	97	A+	82	82	77	-	United State	
EGO	Eldorado Gold Corpo...	0.53%	\$ 4.29B	Materials	Metals & Mining	Gold	✓	-	85	95	95	84	95	-	72	87	91	Jul 31, 2025	Canada	
MUFG	Mitsubishi UFJ Finan...	-0.65%	\$ 159.57B	Financials	Banks	Diversified Banks	✓	3.49%	84	94	99	98	84	A+	75	75	82	-	Japan	
PLMR	Palomar Holdings, In...	-1.31%	\$ 4.64B	Financials	Insurance	Property & Casualty Insurance	✓	-	80	95	99	99	75	A	74	85	94	-	United State	
PLTR	Palantir Technologie...	-5.04%	\$ 312.77B	Information Ti	Software	Systems Software	✓	-	80	98	98	99	88	A	54	90	95	-	United State	
AGI	Alamos Gold Inc.	0.15%	\$ 11.33B	Materials	Metals & Mining	Gold	✓	-	76	87	95	86	88	A	57	61	85	Jul 30, 2025	Canada	
INOD	Innodata Inc.	-2.99%	\$ 1.39B	Industrials	Professional Services	Data Processing & Outsource...	✓	-	69	56	93	98	98	A+	76	67	80	-	United State	
CALM	Cal-Maine Foods, Inc.	-0.72%	\$ 4.74B	Consumer Sta	Food Products	Packaged Foods & Meats	✓	1.99%	61	89	88	92	98	A	55	59	45	Jul 23, 2025	United State	
DASH	DoorDash, Inc.	1.86%	\$ 90.06B	Consumer Disi	Hotels, Restaurants & Leisure	Restaurants	✓	-	61	68	88	93	98	A+	63	76	85	-	United State	
ATAT	Atour Lifestyle Holdi...	0.06%	\$ 4.28B	Consumer Disi	Hotels, Restaurants & Leisure	Hotels, Resorts & Cruise Lines	✓	-	61	40	77	86	89	A+	87	76	82	-	China	
ASND	Ascendis Pharma A/S	-0.43%	\$ 10.3B	Health Care	Biotechnology	Biotechnology	✓	-	60	78	92	78	74	A	49	70	89	Sep 04, 20...	Denmark	
CPRX	Catalyst Pharmaceu...	0.60%	\$ 3.03B	Health Care	Biotechnology	Biotechnology	✓	-	54	70	83	78	84	A	53	66	77	-	United State	
BCRX	BioCryst Pharmaceu...	0.18%	\$ 2.34B	Health Care	Biotechnology	Biotechnology	✓	-	52	84	92	83	86	A	49	90	94	-	United State	
RELY	Remitly Global, Inc.	-1.38%	\$ 4.23B	Financials	Financial Services	Transaction & Payment Proc...	✓	-	50	62	87	98	90	A+	35	41	49	-	United State	
ZLAB	Zai Lab Limited	15.03%	\$ 3.36B	Health Care	Biotechnology	Biotechnology	✓	-	38	25	62	68	70	B	81	72	87	-	China	
TGTX	TG Therapeutics, Inc.	-0.10%	\$ 5.34B	Health Care	Biotechnology	Biotechnology	✓	-	36	55	80	88	94	A+	27	34	60	-	United State	
WGS	GeneDx Holdings Cor...	-0.97%	\$ 2.05B	Health Care	Health Care Equipment & Sup...	Health Care Equipment	✓	-	35	5	43	79	89	A+	73	19	49	Aug 12, 20...	United State	
FUTU	Futu Holdings Limited	2.74%	\$ 14.6B	Financials	Capital Markets	Investment Banking & Broker...	✓	-	34	33	85	94	80	A	63	66	84	-	Hong Kong	
EH	EHang Holdings Limi...	0.31%	\$ 1.16B	Industrials	Aerospace & Defense	Aerospace & Defense	✓	-	29	41	74	68	66	A+	13	13	37	-	China	
ADMA	ADMA Biologics, Inc.	-0.46%	\$ 4.86B	Health Care	Biotechnology	Biotechnology	✓	-	26	68	84	88	98	A+	13	45	74	-	United State	
ARQT	Arcutis Biotherapeut...	0.00%	\$ 1.67B	Health Care	Biotechnology	Biotechnology	✓	-	25	37	78	82	84	A+	13	18	59	-	United State	
PGR	The Progressive Cor...	-0.21%	\$ 168.69B	Financials	Insurance	Property & Casualty Insurance	✓	1.72%	24	48	86	93	87	A	45	53	74	-	United State	
BOW	Bowhead Specialty ...	-0.79%	\$ 1.23B	Financials	Insurance	Property & Casualty Insurance	✓	-	23	67	88	95	62	A	16	32	61	-	United State	

LAST / FWD 20-20 SCAN...



Active Opps
Todd Gordon

1 Day 0.20% | 1 Week 0.43% | 1 Month 6.97% | Total 12.07% | Portfolio Value \$1.55M

Performance: 11.71% May 16, 2025

Distribution

Today	Total	Hide Cash
Cash 36.43%	PLTR -2.67%	NVDA +0.09%
	RBLX +0.59%	AXON +1.08%
	HOOD +0.12%	UBER +2.30%
SPOT +2.38%		APP

16 Positions
Day Return: \$5,179.32 (0.34%)

Symbol	Last Price	Day Change	Day Return	Total Return	Quantity	Avg Cost	Total Cost	Current Value
SPOT Spotify Technology S...	\$689.00	\$17.93 2.90%	\$3,504.24 2.90%	\$12,218.87 10.90%	180	\$622.66	\$112,077.97	\$124,296.84 8.01%
PLTR Palantir Technologies	\$129.66	-\$3.46 -2.33%	-\$2,369.97 -2.33%	\$31,433.09 46.20%	765	\$88.93	\$68,029.92	\$99,463.01 6.41%
RBLX Roblox	\$90.57	\$0.624 0.71%	\$645.16 0.71%	\$16,845.28 22.40%	1,016	\$74.01	\$75,189.08	\$92,034.36 5.93%
HOOD Robinhood Markets	\$71.96	\$0.243 0.54%	\$392.32 0.54%	\$22,264.14 43.48%	1,019	\$50.26	\$51,210.86	\$73,475.00 4.74%
NVDA Nvidia	\$141.61	\$0.209 0.13%	\$86.56 0.13%	\$12,565.69 24.03%	458	\$114.15	\$52,282.07	\$64,847.76 4.18%
AXON Axon Enterprise	\$767.50	\$8.43 1.13%	\$713.72 1.13%	\$15,773.82 32.90%	83	\$577.62	\$47,942.71	\$63,716.53 4.11%
UBER Uber Technologies	\$84.32	\$1.79 2.14%	\$1,300.36 2.14%	\$4,782.24 8.33%	738	\$77.81	\$57,425.26	\$62,207.50 4.01%
APP Applovin	\$403.47	\$4.96 1.35%	\$798.61 1.35%	\$14,340.61 31.56%	148	\$307.01	\$45,437.48	\$59,778.09 3.85%
DASH DoorDash	\$217.67	\$3.97 1.96%	\$1,098.81 1.96%	\$2,749.66 5.04%	263	\$207.42	\$54,552.25	\$57,301.91 3.69%
VST Vistra	\$176.41	\$0.407 0.41%	\$232.00 0.41%	\$11,592.64 25.78%	320	\$140.50	\$44,959.36	\$56,552.00 3.65%
TSLA Tesla	\$338.12	-\$6.15 -1.74%	-\$887.26 -1.74%	\$6,727.78 15.52%	148	\$292.82	\$43,336.92	\$50,064.70 3.23%
IBIT iShares Bitcoin Trust E...	\$59.73	-\$0.67 -1.12%	-\$553.79 -1.12%	\$10,962.83 28.93%	818	\$46.32	\$37,890.58	\$48,853.41 3.15%
TMDX TransMedics Group	\$129.63	\$0.892 0.70%	\$328.47 0.70%	\$969.62 2.08%	367	\$126.99	\$46,606.43	\$47,576.05 3.07%
SHOP Shopify	\$105.52	\$0.405 0.39%	\$174.56 0.39%	\$543.93 1.21%	431	\$104.25	\$44,933.04	\$45,476.97 2.93%
SRAD Sportradar Group AG ...	\$23.44	-\$0.162 -0.69%	-\$284.47 -0.69%	\$305.55 0.75%	1,756	\$23.26	\$40,851.58	\$41,157.13 2.65%
Subtotal			\$5,179.32 0.53%	\$164,075.75 19.94%			\$822,725.51	\$986,801.26 63.62%
Cash								\$564,273.93 36.38%
Total								\$1,551,075.19 100.00%

CURRENT POSITIONS



CME FEDWATCH TOOL - AGGREGATED MEETING PROBABILITIES						
MEETING DATE	300-325	325-350	350-375	375-400	400-425	425-450
6/18/2025	0.00 %	0.00 %	0.00 %	0.00 %	1.28 %	98.72 %
7/30/2025	0.00 %	0.00 %	0.00 %	0.00 %	24.01 %	75.99 %
9/17/2025	0.00 %	0.00 %	0.00 %	0.00 %	82.70 %	17.30 %
10/29/2025	0.00 %	0.00 %	0.00 %	34.01 %	65.99 %	0.00 %
12/10/2025	0.00 %	0.00 %	0.00 %	94.69 %	5.31 %	0.00 %
1/28/2026	0.00 %	0.00 %	29.01 %	70.99 %	0.00 %	0.00 %
3/18/2026	0.00 %	0.00 %	78.15 %	21.85 %	0.00 %	0.00 %
4/29/2026	0.00 %	4.01 %	95.99 %	0.00 %	0.00 %	0.00 %
6/17/2026	0.00 %	42.70 %	57.30 %	0.00 %	0.00 %	0.00 %
7/29/2026	0.00 %	63.01 %	36.99 %	0.00 %	0.00 %	0.00 %
9/16/2026	0.00 %	89.73 %	10.27 %	0.00 %	0.00 %	0.00 %
10/28/2026	3.01 %	96.99 %	0.00 %	0.00 %	0.00 %	0.00 %
12/9/2026	48.10 %	51.90 %	0.00 %	0.00 %	0.00 %	0.00 %

The Fedwatch tool's "Aggregated" view compares the rates implied by CME's Fed Funds futures with the current target rate range as set by the Federal Reserve. As such, it provides a view into the cumulative number of hikes or cuts that the market is pricing by a certain point in the future. This is provided in addition to the traditional "Conditional" view of probabilities, familiar to long-term users of the FedWatch tool.



US recession in 2025?

\$6,215,160 Vol. ⌚ Feb 28, 2026

YES

28% chance ↑ 9%

Polymarket



1H 6H 1D 1W 1M ALL

</> ↺ ⚙️



US ECONOMY - RATES, RECESSION, FX

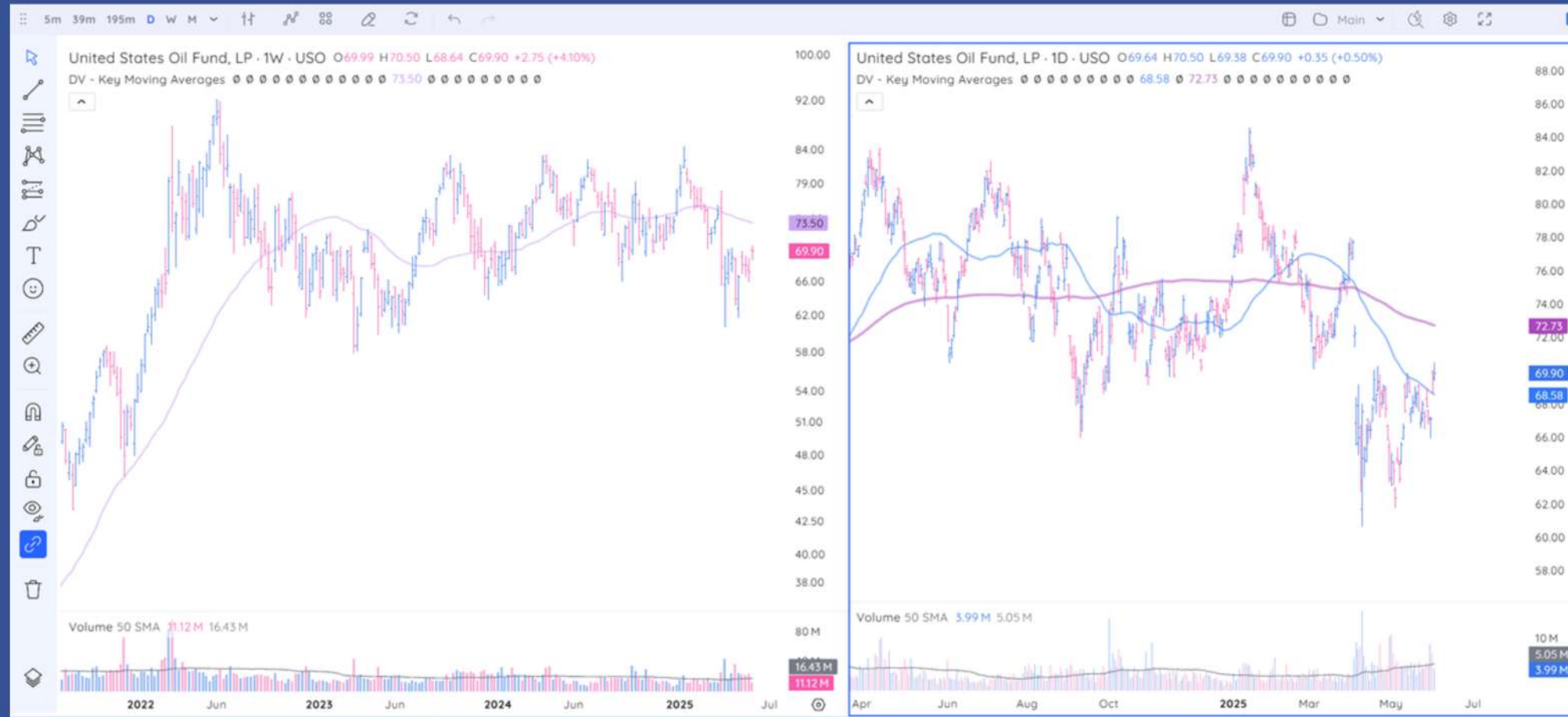




US ECONOMY - RATES, RECESSION, FX



Crude Oil ETF USO - Weekly



Crude Oil ETF USO - Daily

Gold ETF USO - Weekly



Gold ETF USO - Daily

US ECONOMY - RATES, RECESSION, FX



So, it's time for a big
announcement...



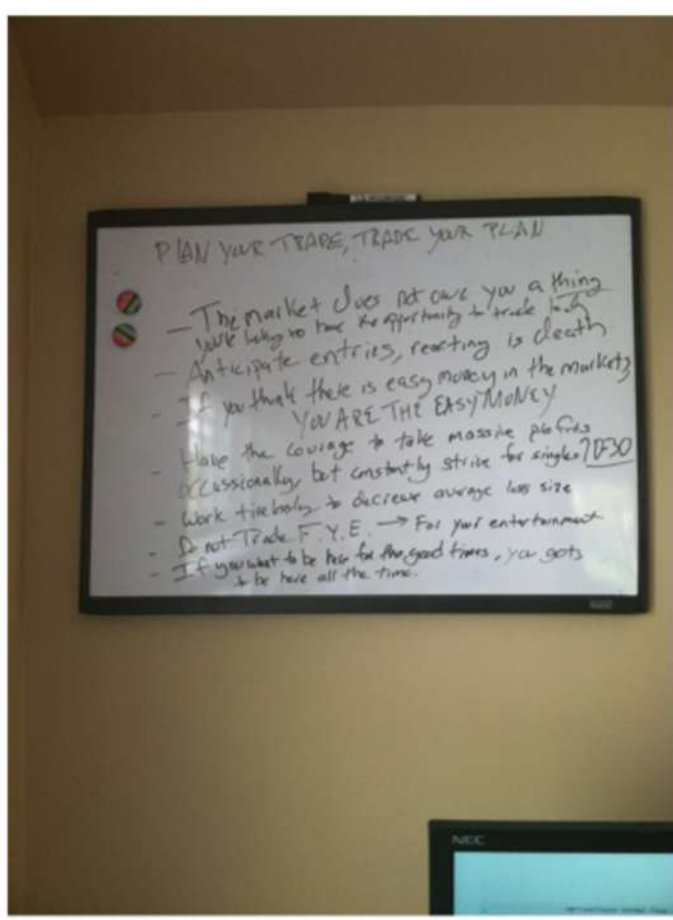
After 13 years, TradingAnalysis is shutting down

Analysis and Trading The TradingAnalysis.com Way

With Todd Gordon
Founder – TradingAnalysis
Contributor - CNBC



Trading Rules



Past performance is not indicative of future results. Trading leverage futures or foreign exchange involves risk of a loss. Never risk capital you can't afford to lose.

After 13 years, TradingAnalysis is shutting down

The Inside Edge brand and corporate identity is something I've dreamed of for years and one that better represents my goals, personality, soul, and one that I think my family will be more proud of as I pass to next generation. The 'trading education' business brings an element of get-rich-quick traders and unscrupulous educators to serve that demand. Frankly, I want to no part of that and my time is much better spent working with investors who appreciate a money manager trying to generate returns above those offered in the benchmark while working to reduce volatility / risk on the downside. Don't get me wrong, I've met some WONDERFUL people through TradingAnalysis, which is why Inside Edge exists today. And for that I'm deeply grateful to you and TradingAnalysis. Plus, I'm turning into a trader / investor who consumes research from those much more talented than I. My job and value add is to take that information and turn into portfolio returns...

TRADINGANALYSIS IS SHUTTING DOWN





My Vision

Active portfolio management shared through transparent, on-going, frequent, regular updates based on many of the same analytics shared at TradingAnalysis.com. It's our belief that the most effective way to capture alpha (portfolio returns above that of the benchmarks) is through a rigorous step-by-step approach of both macro, fundamental, and technical analysis of the capital markets.

TRADINGANALYSIS IS SHUTTING DOWN





My Vision



Inside Edge Capital will be one of the VERY FEW registered wealth management firms in the world that offers active individual stock management, comprehensive financial planning, AS WELL AS transparent, actionable, educational content sharing the process as markets unfold. As we did with TradingAnalysis we'll show the good, bad, and ugly along the way.

TRADINGANALYSIS IS SHUTTING DOWN



After 13 years, TradingAnalysis is shutting down

This is the last video update

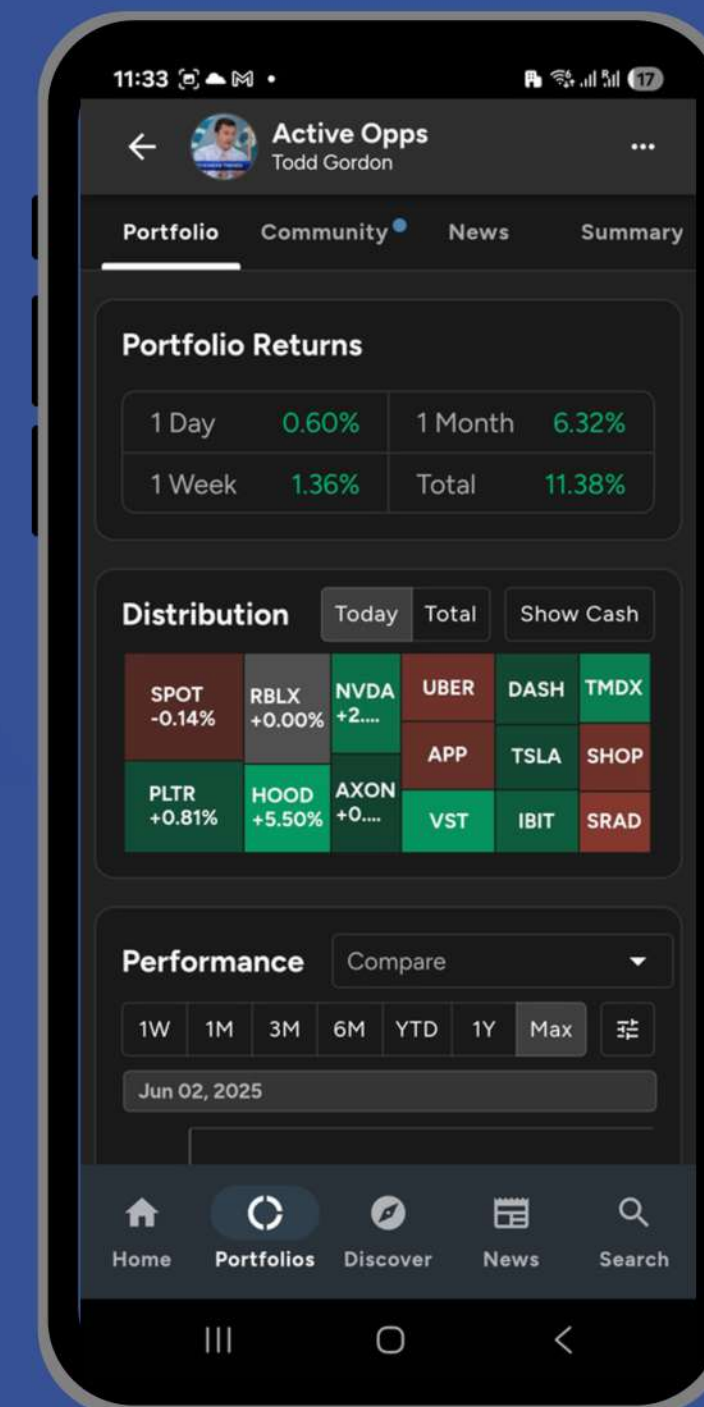
But don't worry - you're not getting left behind

We're moving to Inside Edge Capital + Savvy Trader

What You Get (and Need to Do)

- The full Active Opps portfolio
- Real-time alerts via SMS & mobile
- Web + mobile app access
- Research tools: earnings, news, heatmaps
- Video Updates via IEC member portal each Monday and Wednesday of the week.

Sign up on Savvy Trader to continue receiving updates!



Your Free Access + What's Coming

- We're emailing you a **coupon for FREE access** to Active Opps on Savvy Trader (good for the rest of your TA membership)
- **Use the link in that email to sign up on Savvy Trader** - that's how you'll keep getting updates
- Didn't get the email? Contact us: **info@tradinganalysis.com**
- Plus: You'll also get access to a new IEC Members Area for 2x/week video updates - we'll send that link separately after you sign up on Savvy



 **Savvy Trader**

TRADINGANALYSIS IS SHUTTING DOWN



Shame Board (aka “Come on guys”)

These legends still haven't claimed their free Savvy access 🤔

Ibrahim B, Brandan H, Harvey N, Jan K, Jim C, Jonathan J, Kevin B, Kirk W, Mike W, Milen B, Hartley A, Tin N, Mark C, Mike H, Mike N, Nik K, Haresh A, Norbert B, Upen P, Peter G, Kent P, Robert D, Rick S, Mike P, Robert S, Steve F, Simon B, Stanley J, Tom P, Todd W, Bill S, Younis A, Zachary A, Todd F, Michael L, Isimaila S, Karl G, Zsolt K, Sachin M, James N, Phillip P, Tolga A, Hermann A, Meg A, Shane C, Charles D, Adrian G, Warren L, Jack M, James M, Dragos P, Karthik R, Matthew R, Lampros S, George P, Doug W, James Z

If you see your name above, refer back to prior slide and get on it! Else, this will be goodbye!